



# Trav-L-Cutter

MODEL E (PNEUMATIC), MODEL HE (HYDRAULIC)

The Wachs Trav-L-Cutter is a portable milling machine capable of cold cutting and beveling simultaneously on all machinable pipe materials, pipe schedules and pipe sizes from 6" up to 72" O.D. Secured by its own tensioning chain, the Trav-L-Cutter drives itself around the pipe as it machines.



- Safe Cold Cutting
- Compact Design, Easy Set-Up
- Horizontal and Vertical Cutting

## Fast and Accurate

Wachs high speed cutters remove 3/16" of metal while cutting, leaving the pipe end with a smooth, machined finish. Typical tolerances of up to 1/16" closure are possible.

The chain feed system maintains continuous out-of-round compensation while providing positive drive under all conditions for accurate cuts.

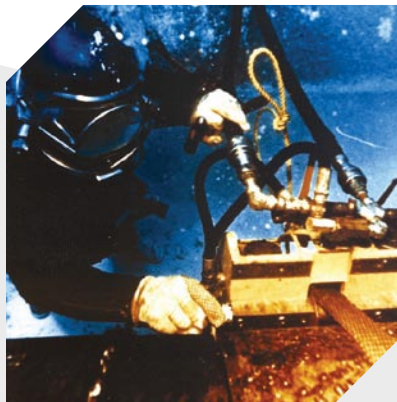
By using an optional guide track and special guide track wheels, accuracy of .005" can be maintained even in zero visibility situations on all pipe sizes. This cutting method facilitates section removal in the field where new sections, pre-cut by the same method, can be easily dropped into place.

## Operates Anywhere

In pneumatic or hydraulic driven models, the Trav-L-Cutter will operate on horizontal or vertical pipe, in the field or the shop, in a mud filled ditch or underwater, where it has been used successfully at depths of 600 feet.

## All Pipe Diameter Including Tanks

Materials such as carbon steel, ductile iron, cast iron and most alloys in all pipe sizes from 6" to 72" can be cold cut and beveled simultaneously. The Trav-L-Cutter can tackle tanks and vessels up to 33 feet in diameter.



"Due to its rugged construction it's not unusual to find Trav-L-Cutters still operating after 20 years of service."

## Hydraulic Trav-L-Cutter

Hydraulic models offer the inherent advantages of a completely sealed and self-lubricating closed loop system. The Model HE is particularly suited to field machining operations under the type of hostile conditions often found on offshore drilling rigs, pipelines and on construction work in rivers and harbors. Corrosion from constant exposure to salt water can be minimized with a stainless steel accessory package including special bearings, seals and anti-corrosive metal coatings.

## Safe and Versatile

The Trav-L-Cutter can be approved for use in explosive conditions, such as natural gas, crude product and fuel lines, and has even been used to cut missile fuel cells. It can also be adapted to simultaneously cut off and groove pipe in one cut. Cutters are available for Victaulic and other grooved coupling systems.



# Trav-L-Cutter

MODEL E (PNEUMATIC), MODEL HE (HYDRAULIC)

## SPECIFICATIONS

**Machining Capacity:** 6" through 72" (153 to 1829 mm) pipe, large diameter vessels.

**Cutter Drive:** Pneumatic: 4 hp governed air motor coupled with worm gearbox. Hydraulic: As above, with hydraulic motor.

**Cutter Speed:** Pneumatic: Adjustable from 35 to 55 rpm for use on work-hardened alloys. Hydraulic: Adjustable from 0-60 rpm.

**Feed:** Pneumatic: 3/4 hp air motor coupled through overload clutch, gearbox and chain reduction to final machine drive sprocket. Hydraulic: 4 hp hydraulic motor.

**Feed Method:** Positive, non-slip chain drive.

**Air Requirements:** 100 cfm @ 90 psi.

**Hydraulic Requirements:** 14 gpm @ 1500 psi.

**Work Speed:** 3" of surface feed per minute, max. (Provides cutting time of 1 min per inch of pipe diameter). (10" pipe = 10 min.) Over 1/2" wall as well as most alloys require reduced feed rate.

**Clearance:** 10"-12" radial, 20" axial.

**Controls (Model E & HE):** Cutter on-off, feed on-off, with interlock to prevent machine feed unless cutter is turning, adjustable feed control. (Model HE Only) Flow control valves. Separate controls provide adjustable spindle speed and cutter speed. Forward/Reverse valve governs machine travel direction.

**Weight:** Operating: 215 lbs., Shipping: 418 lbs.

**Finish:** Paint.

**Dimensions (LxWxH):** 24" (61 cm) x 20" (51 cm) x 10.75" (28 cm).

## Standard Equipment:

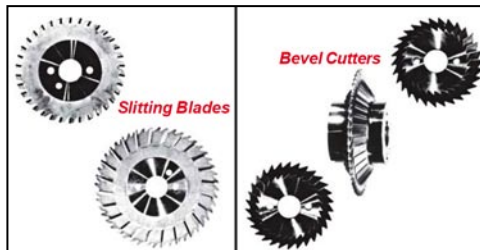
- Operating manual and isometric parts list
- Operating tools
- Spare chain
- Connecting pins
- Basic mounting chain for 6" dia. pipe
- Steel storage case
- Reversible feed motor
- 6' whip hose w/oiler (air only)

## Optional Equipment:

- Additional chain for any diameter pipe
- Additional cutter blades
- Spray mist cooling system
- Halogen-free cutter coolant
- Guide track and wheels to fit all pipe sizes up to 72" for vertical cutting multiple pass cutting or high accuracy cutting
- Long cutter spindle for use with grooving cutters
- Corrosion resistant package

## TRAV-L-CUTTER SLITTING BLADES AND BEVEL CUTTERS

Wachs supplies a wide variety of cutting blades to meet most applications. These include slitting blades for various pipe materials and schedules, and beveling cutters for 37.5° and 30°. Most are in stock and ready for overnight shipment. Please contact your local Wachs representative for availability.



## WARRANTY

E.H. Wachs Trav-L-Cutter and its associated parts are warranted against defects in materials and workmanship for a period of twelve months from the date of purchase. E.H. Wachs reserves the right to repair or replace only those parts which prove to have been defective at the time of purchase. This warranty becomes void if maximum flow and pressure ratings are exceeded.

